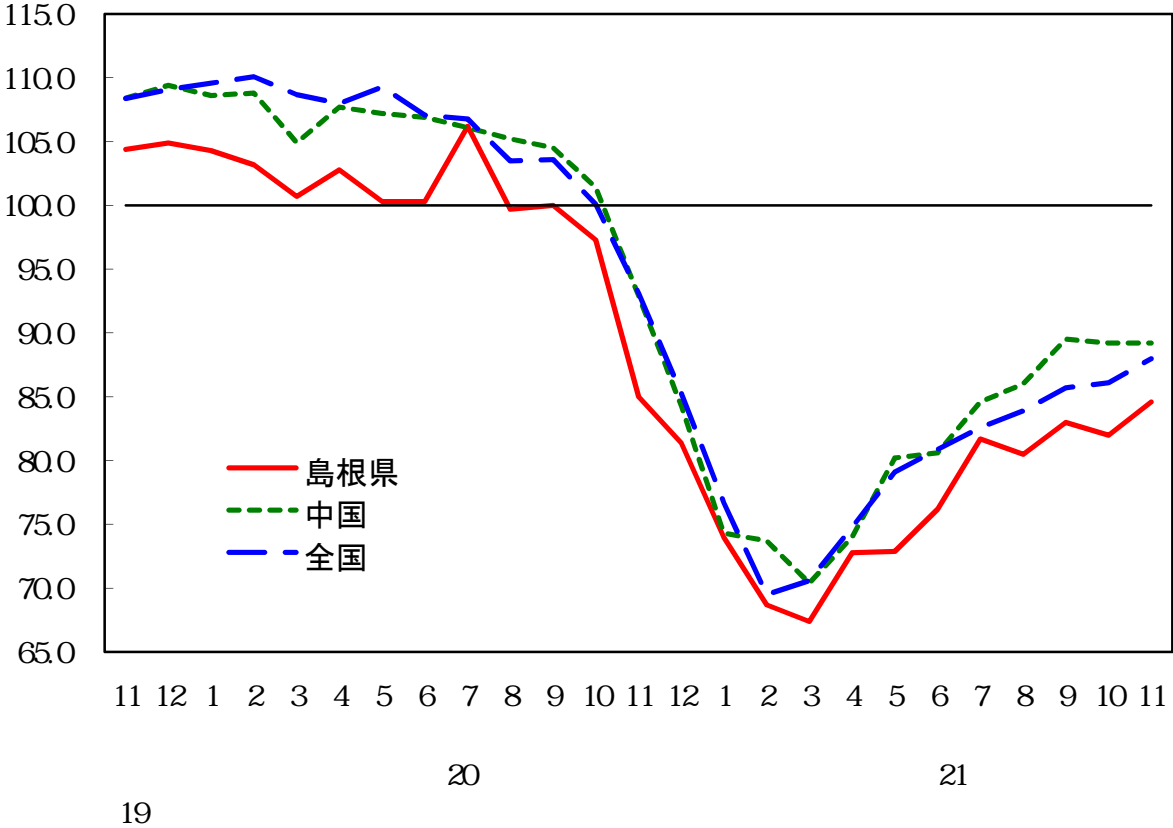


		44
22	1	20

17 100



	84.6	89.2	88.0
	82.0	89.2	86.1
	3.2	0.0	2.2
	1.0	3.2	4.2

17 =100

84.6

3.2

5

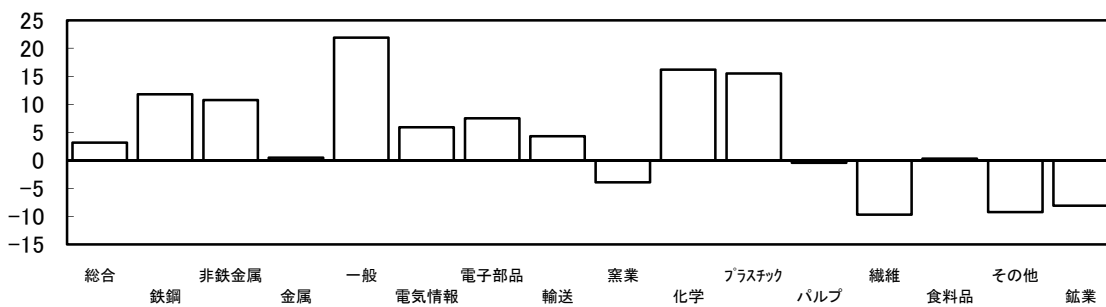
10

(対前月比—季節調整済指数、対前年同月比—原指数)

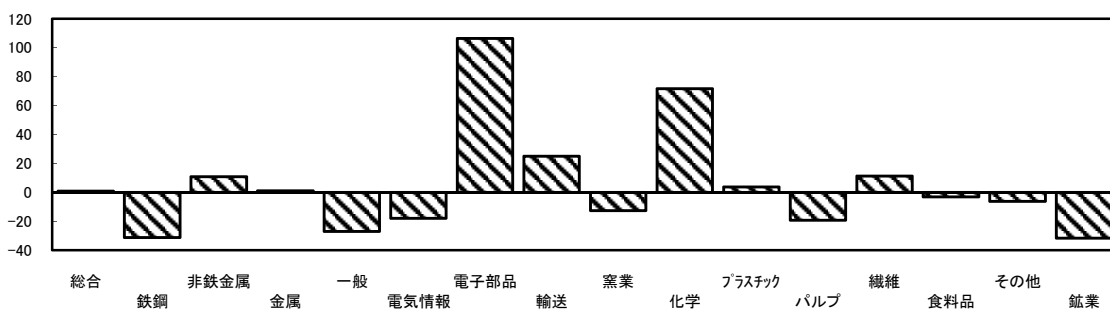
	対前月比		対前年同月比	
		21.9 (53.0)		106.5 (990.6)
		16.2 (16.7)		71.8 (162.4)
		9.7 (14.8)		31.7 (10.2)
		9.2 (27.9)		31.3 (705.7)

	対前月比		対前年同月比	
1		54.8 (11.8)		990.6 (106.5)
2		53.0 (21.9)		187.6 (25.1)
3		47.4 (7.5)		162.4 (71.8)

業種別上昇率・低下率[対前月比]



業種別上昇率・低下率[対前年同月比]



		20 11	21 9	21 10	21 11	(%)	(%)	(%)	21 8	21 9	21 10	21 11	(%)	(%)
	10,000.0	86.4	86.5	85.7	87.3	1.9	1.0	100.0	80.5	83.0	82.0	84.6	3.2	100.0
	9,970.4	86.3	86.5	85.7	87.3	1.9	1.2	110.8	80.5	83.0	82.0	84.6	3.2	99.7
	2,096.1	96.9	55.8	60.2	66.6	10.6	31.3	705.7	47.7	54.8	57.5	64.3	11.8	54.8
	160.6	79.2	70.2	78.5	87.8	11.8	10.9	15.3	81.6	78.2	74.1	82.1	10.8	4.9
	356.2	90.4	62.3	81.0	91.4	12.8	1.1	4.0	76.1	66.8	91.0	91.5	0.5	0.7
	1,465.3	67.8	78.8	35.8	49.5	38.3	27.0	297.9	66.4	69.4	42.9	52.3	21.9	53.0
	444.3	108.3	81.9	92.2	88.9	3.6	17.9	95.8	74.0	77.5	86.5	91.6	5.9	8.7
	1,270.0	65.9	139.8	148.8	136.1	8.5	106.5	990.6	125.8	125.1	128.5	138.2	7.5	47.4
	750.2	89.8	117.4	117.1	112.3	4.1	25.1	187.6	109.1	112.2	104.4	108.9	4.3	13.0
	677.8	81.7	68.9	75.1	71.4	4.9	12.6	77.6	78.4	68.9	63.4	60.9	3.9	6.5
	210.6	96.6	144.5	141.5	166.0	17.3	71.8	162.4	138.6	143.2	126.8	147.4	16.2	16.7
	173.6	102.9	87.7	92.9	106.8	15.0	3.8	7.5	98.6	85.1	90.1	104.1	15.5	9.3
	163.0	102.3	96.8	90.2	82.7	8.3	19.2	35.5	79.5	88.9	72.5	72.2	0.4	0.2
	448.2	73.9	86.8	90.7	82.3	9.3	11.4	41.8	86.3	88.0	89.1	80.5	9.7	14.8
	910.9	103.8	77.5	90.3	100.7	11.5	3.0	31.4	88.9	80.6	85.8	86.1	0.3	1.1
	843.6	90.3	91.0	97.3	84.7	12.9	6.2	52.5	84.4	90.7	93.3	84.7	9.2	27.9
	106.2	104.9	141.2	143.5	142.3	0.8	35.7	44.1	116.6	136.3	134.1	137.5	2.5	1.4
	197.7	71.9	58.0	65.9	45.0	31.7	37.4	59.1	52.6	63.1	68.1	50.7	25.6	13.2
	466.3	95.8	93.2	98.8	90.3	8.6	5.7	28.5	87.2	91.0	95.4	88.9	6.8	11.7
	24.2	94.3	64.5	87.5	93.5	6.9	0.8	0.2	102.8	64.9	74.0	85.9	16.1	1.1
	49.2	78.2	106.7	114.3	62.3	45.5	20.3	8.7	88.0	119.8	105.5	49.6	53.0	10.6
	29.6	97.4	81.8	78.2	66.5	15.0	31.7	10.2	82.2	78.7	74.9	68.8	8.1	0.7
	13,581.4	82.8	90.7	93.8	94.4	0.6	14.0	-	79.8	88.7	89.5	92.1	2.9	-
	3,581.4	72.8	102.5	116.6	114.4	1.9	57.1	-	75.1	103.3	113.3	117.4	3.6	-
	3,929.8	76.0	106.2	94.2	93.9	0.3	23.6	781.6	93.8	95.0	90.8	95.7	5.4	74.1
	1,714.3	76.9	124.8	134.1	123.9	7.6	61.1	895.2	113.1	110.8	117.3	130.0	10.8	83.7
	1,222.3	63.2	72.7	25.1	40.0	59.4	36.7	315.1	51.5	60.9	31.7	42.3	33.4	49.8

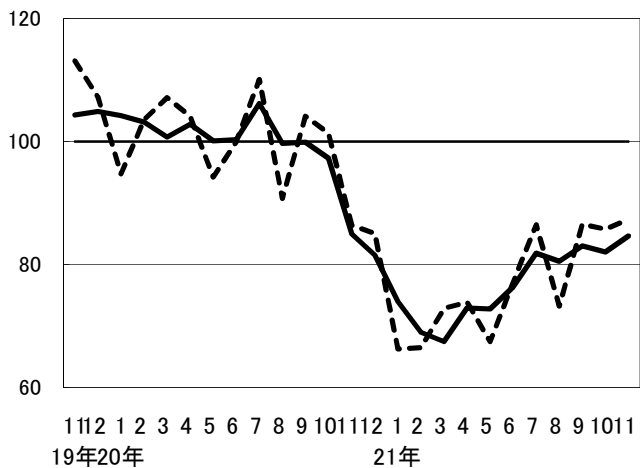
()

	10,000.0	86.4	86.5	85.7	87.3	1.9	1.0	100.0	80.5	83.0	82.0	84.6	3.2	100.0
	4,498.0	83.1	76.9	68.2	73.7	8.1	11.3	469.8	74.7	73.8	68.6	71.0	3.5	41.5
	3,293.1	76.3	75.3	60.7	64.9	6.9	14.9	417.1	71.1	71.5	62.8	64.8	3.2	25.3
	1,770.7	69.1	79.1	43.0	54.3	26.3	21.4	291.2	67.1	70.0	49.8	56.7	13.9	47.0
	1,522.4	84.6	70.9	81.4	77.3	5.0	8.6	123.5	76.8	72.0	73.2	72.3	1.2	5.3
	1,204.9	101.8	81.3	88.4	97.5	10.3	4.2	57.6	85.3	82.9	83.3	84.7	1.7	6.5
	124.9	84.5	74.7	71.3	60.5	15.1	28.4	33.3	79.7	80.0	75.8	65.4	13.7	5.0
	1,080.0	103.8	82.0	90.4	101.8	12.6	1.9	24.0	85.7	84.1	84.2	85.9	2.0	7.1
	5,502.0	89.0	94.3	100.0	98.4	1.6	10.6	574.7	85.7	90.2	92.4	95.9	3.8	74.1

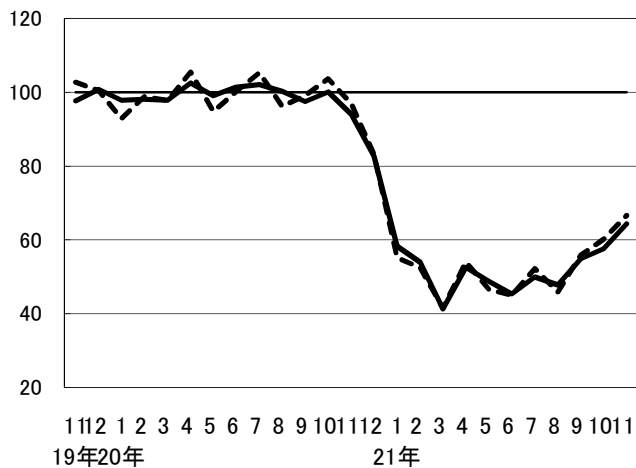
業種別指数の推移(平成17年=100)

原指数 季節調整済
 ----- _____

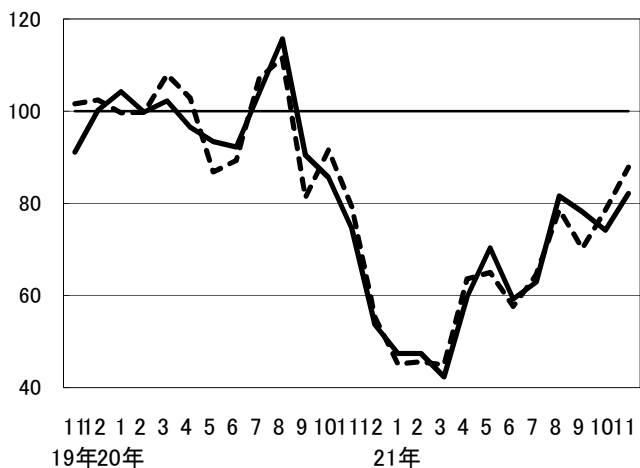
製造工業



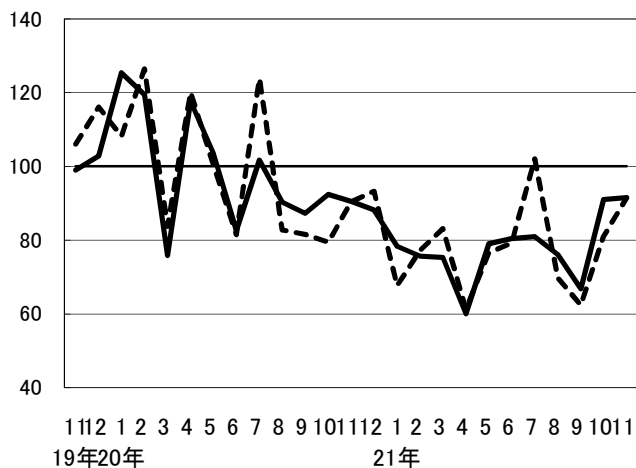
鉄鋼業



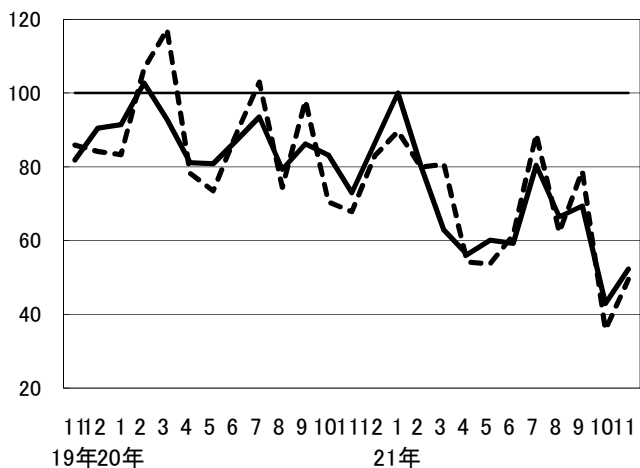
非鉄金属工業



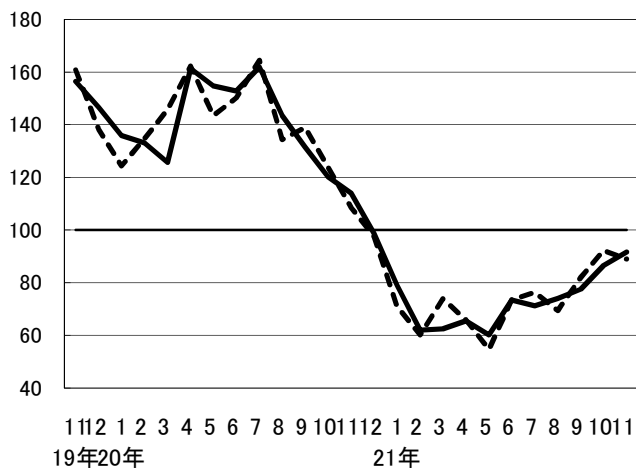
金属製品工業



一般機械工業



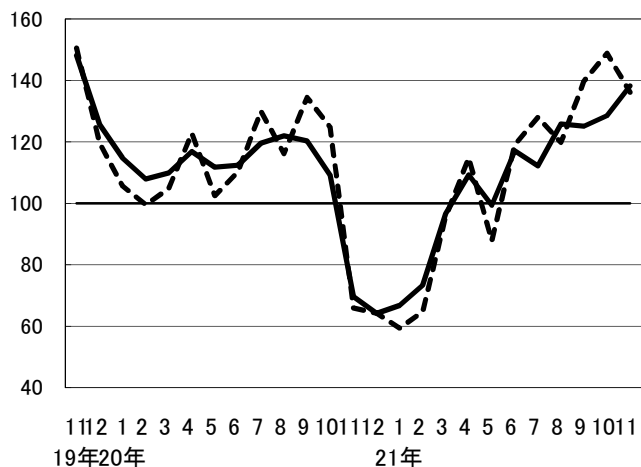
電気機械・情報通信機械工業



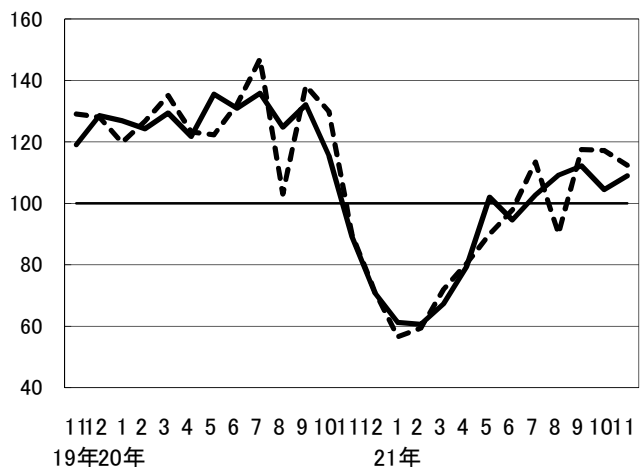
業種別指数の推移(平成17年=100)

原指数 ----- 季節調整済 —————

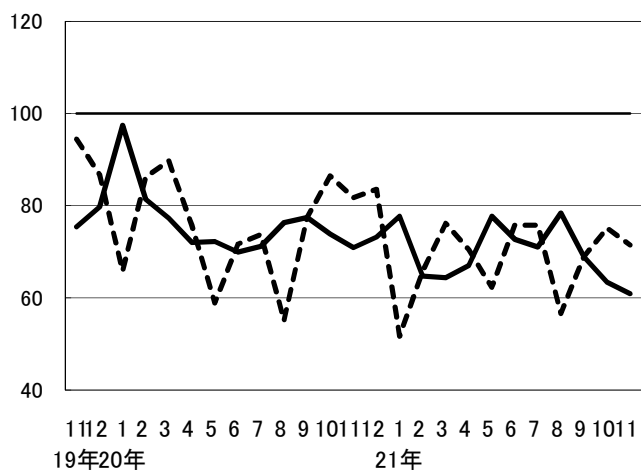
電子部品・デバイス工業



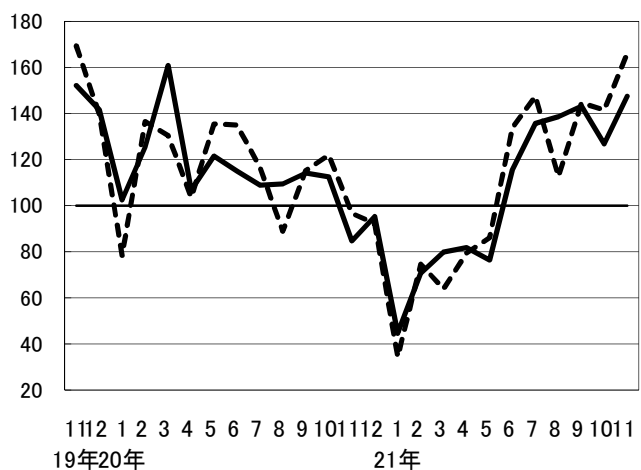
輸送機械工業



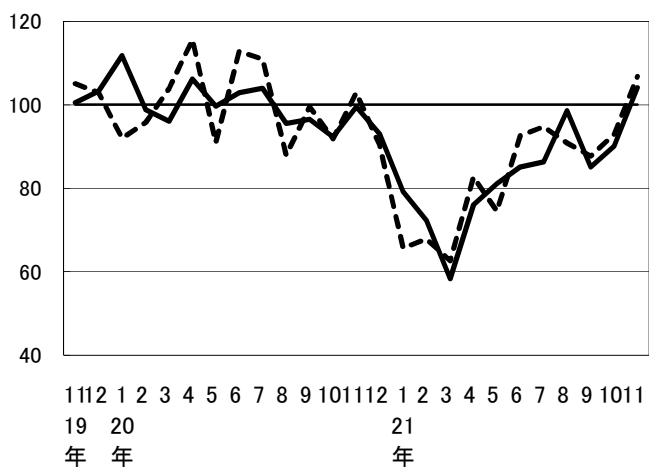
窯業・土石製品工業



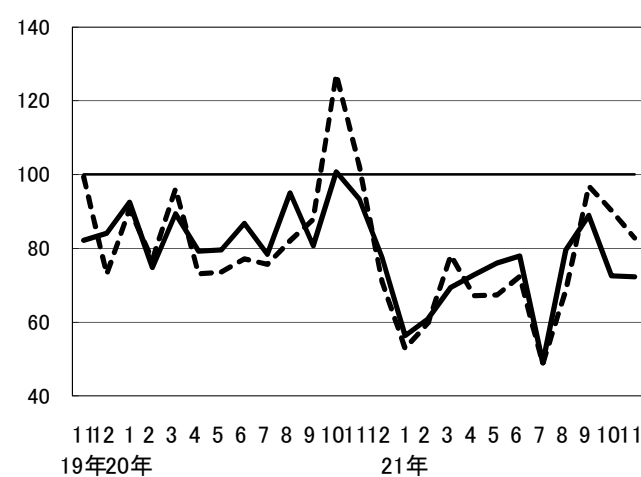
化学工業



プラスチック製品工業



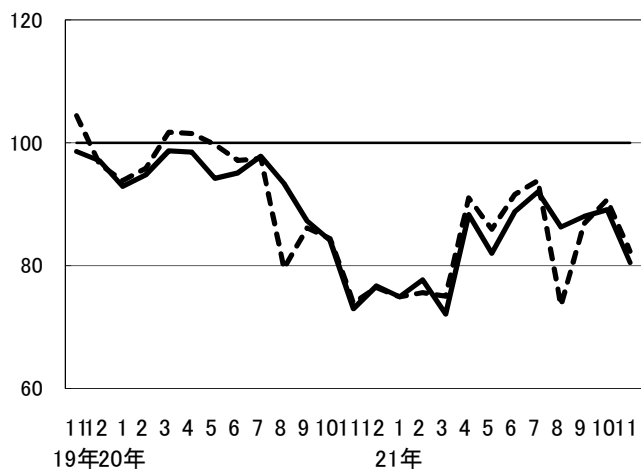
パルプ・紙・紙加工品工業



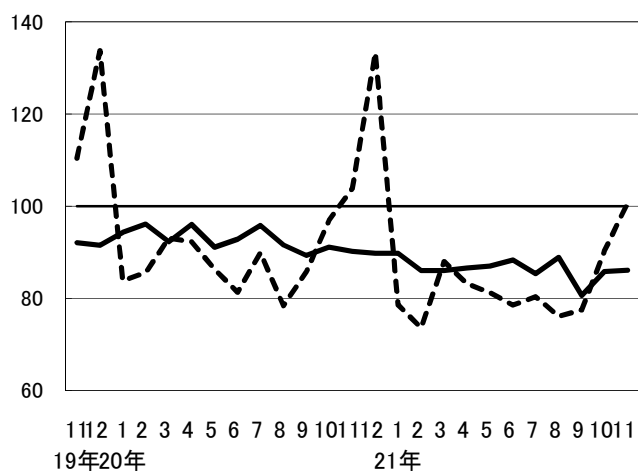
業種別指数の推移(平成17年=100)

原指数 季節調整済
 ----- _____

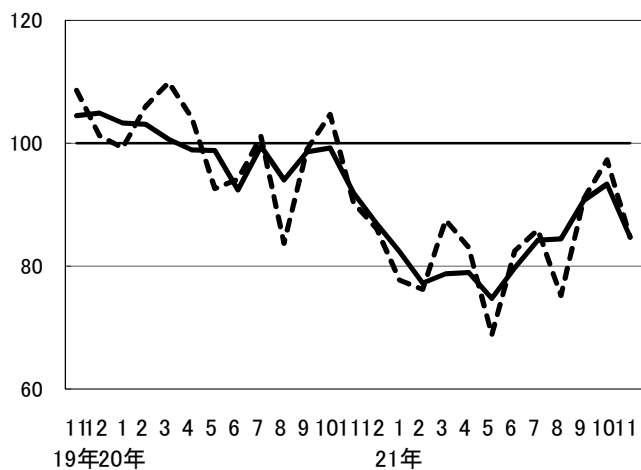
繊維工業



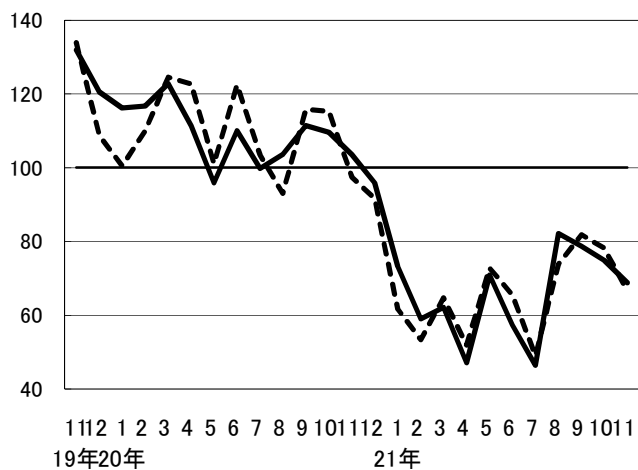
食料品・たばこ工業



その他工業



鉱業



19	11	113.1	109.5	113.1	104.4	108.4	108.4
	12	107.2	111.8	109.7	104.9	109.4	109.1
20	1	94.7	103.9	101.6	104.3	108.6	109.6
	2	103.5	108.7	109.1	103.2	108.8	110.1
	3	107.1	113.2	116.5	100.7	104.9	108.7
	4	104.2	104.4	104.2	102.8	107.7	108.0
	5	94.2	102.5	102.2	100.3	107.2	109.3
	6	99.9	107.5	108.7	100.3	106.9	107.1
	7	110.1	110.4	110.6	106.2	106.1	106.8
	8	90.7	101.9	95.5	99.7	105.2	103.5
	9	104.2	108.0	110.0	100.0	104.5	103.6
	10	101.3	102.6	105.9	97.3	101.4	100.1
	11	86.4	91.2	94.4	85.0	92.9	93.1
	12	85.0	86.0	87.0	81.4	84.3	85.3
21	1	66.2	70.5	70.2	74.0	74.3	76.7
	2	66.3	69.6	67.2	68.7	73.7	69.5
	3	72.8	77.2	76.7	67.4	70.4	70.6
	4	73.8	71.7	72.2	72.8	74.0	74.8
	5	67.4	74.4	72.0	72.9	80.2	79.1
	6	77.0	81.7	83.2	76.2	80.6	80.9
	7	86.3	88.0	85.5	81.7	84.6	82.6
	8	73.2	83.3	77.4	80.5	86.0	83.9
	9	86.5	90.5	89.8	83.0	89.5	85.7
	10	85.7	89.6	89.9	82.0	89.2	86.1
	11	87.3	88.3	90.4	84.6	89.2	88.0

